

Архангельск (8182)63-90-72
 Астана (7172)727-132
 Астрахань (8512)99-46-04
 Барнаул (3852)73-04-60
 Белгород (4722)40-23-64
 Брянск (4832)59-03-52
 Владивосток (423)249-28-31
 Волгоград (844)278-03-48
 Вологда (8172)26-41-59
 Воронеж (473)204-51-73
 Екатеринбург (343)384-55-89
 Иваново (4932)77-34-06

Ижевск (3412)26-03-58
 Иркутск (395)279-98-46
 Казань (843)206-01-48
 Калининград (4012)72-03-81
 Калуга (4842)92-23-67
 Кемерово (3842)65-04-62
 Киров (8332)68-02-04
 Краснодар (861)203-40-90
 Красноярск (391)204-63-61
 Курск (4712)77-13-04
 Липецк (4742)52-20-81

Магнитогорск (3519)55-03-13
 Москва (495)268-04-70
 Мурманск (8152)59-64-93
 Набережные Челны (8552)20-53-41
 Нижний Новгород (831)429-08-12
 Новокузнецк (3843)20-46-81
 Новосибирск (383)227-86-73
 Омск (3812)21-46-40
 Орел (4862)44-53-42
 Оренбург (3532)37-68-04
 Пенза (8412)22-31-16

Пермь (342)205-81-47
 Ростов-на-Дону (863)308-18-15
 Рязань (4912)46-61-64
 Самара (846)206-03-16
 Санкт-Петербург (812)309-46-40
 Саратов (845)249-38-78
 Севастополь (8692)22-31-93
 Симферополь (3652)67-13-56
 Смоленск (4812)29-41-54
 Сочи (862)225-72-31
 Ставрополь (8652)20-65-13

Сургут (3462)77-98-35
 Тверь (4822)63-31-35
 Томск (3822)98-41-53
 Тула (4872)74-02-29
 Тюмень (3452)66-21-18
 Ульяновск (8422)24-23-59
 Уфа (347)229-48-12
 Хабаровск (4212)92-98-04
 Челябинск (351)202-03-61
 Череповец (8202)49-02-64
 Ярославль (4852)69-52-93

Киргизия (996)312-96-26-47

Россия (495)268-04-70

Казахстан (772)734-952-31

<https://mersen.nt-rt.ru/> || mnh@nt-rt.ru

D fuse-bases

FUSE HOLDERS, FUSE BASES AND SUPPORTS

IEC DO & D FUSE BASES



The D fuse-system is the first generation of the screw fuse-system in the german DIN standard. It is still used in many installations.

Applications are low voltage distribution units, where non trained persons are allowed to change the fuse-links.

The D fuse-range comprises the sizes NDZ, DII, DIII, DIV, DV.

The range of applications for D fuse-links “gG” is the protection of cables and power lines. They limit and cut off unacceptable overcurrents and short circuit currents up to their nominal breaking capacity. D fuse-links “gG” also protect equipments and installations against dynamic effects of high short circuit currents.

TECHNICAL DATA OVERVIEW

Voltage AC	500 VAC
Voltage DC	500 VDC
Ampere Range (A)	25 ... 63 A
Product Size	DII/DIII
Number of poles	single-pole, triple-pole

FEATURES & BENEFITS

- Insulated body suitable for high mechanical and thermal impacts
- Top and bottom contacts made of nickel plated copper alloy
- Safe cut off short circuits and over currents due to special design of fuse element
- Clear indication of operation condition due to coloured indicator on top contact
- Low power dissipation
- Optimized size
- Resistant to aging
- Free of lead, cadmium, mercury, chrome 6 (rohs conformity)

APPLICATIONS

- House incoming units
- Meter distribution units
- Distribution cabinets
- Installation cabinets
- Fuse boxes

STANDARDS

- DIN VDE 0636-3



PRODUCT RANGE



00685.110000

Size DII with touch protection, DIN rail mounting

Catalog number	Item number	Size	Rated voltage AC (IEC)	Rated voltage DC (IEC)	Rated current I _n	Number of poles/phases	Connection	Cable termination	Package	Weight
00685.110000	D211511	DII	500 V	500 V	25 A	1	Cross section 1,5 to 10 mm ²	1	10	0.12 kg



00685.100000

Size DII without touch protection, DIN rail mounting

Catalog number	Item number	Size	Rated voltage AC (IEC)	Rated voltage DC (IEC)	Rated current I _n	Number of poles/phases	Connection	Cable termination	Package	Weight
00685.100000	K207055	DII	500 V	500 V	25 A	1	Cross section 1,5 to 10 mm ²	1	15	0.10 kg



00081.110000

Size DII with touch protection, screw mounting

Catalog number	Item number	Size	Rated voltage AC (IEC)	Rated voltage DC (IEC)	Rated current I _n	Number of poles/phases	Connection	Cable termination	Package	Weight
00081.110000	Z219189	DII	500 V	500 V	25 A	1	Cross section 1,5 to 10 mm ²	1	10	0.12 kg



00081.100000

Size DII without touch protection, screw mounting

Catalog number	Item number	Size	Rated voltage AC (IEC)	Rated voltage DC (IEC)	Rated current I _n	Number of poles/phases	Connection	Cable termination	Package	Weight
00081.100000	K218670	DII	500 V	500 V	25 A	1	Cross section 1,5 to 10 mm ²	1	15	0.1 kg



00686.410000

Size DIII with touch protection, DIN rail mounting

Catalog number	Item number	Size	Rated voltage AC (IEC)	Rated voltage DC (IEC)	Rated current I _n	Number of poles/phases	Connection	Cable termination	Package	Weight
00686.410000	C216110	DIII	500 V	500 V	63 A	1	Cross section 2,5 to 25 mm ²	2	10	0.17 kg



00686.400000

Size DIII without touch protection, DIN rail mounting

Catalog number	Item number	Size	Rated voltage AC (IEC)	Rated voltage DC (IEC)	Rated current I _n	Number of poles/phases	Connection	Cable termination	Package	Weight
00686.400000	V215597	DIII	500 V	500 V	63 A	1	Cross section 2,5 to 25 mm ²	2	15	0.15 kg

PRODUCT RANGE



00685.700000

Size DII/DIII cover caps for touch protection

Catalog number	Item number	Size	Number of poles/phases	Design	Package	Weight
00685.700000	H214068	DII	1	Width 40mm	30	15 g
00686.700000	X215093	DIII	1	Width 50mm	30	17 g
00686.709000	X215599	DIII	1	Width 54mm	30	18.5 g



02071.000000

D Screw caps, plastic-design, with testing hole

Catalog number	Item number	Size	Thread	Rated voltage AC (IEC)	Rated voltage DC (IEC)	Rated current I _n	Design	Package	Weight
02071.000000	L201720	DII	E27	500 V	500 V	25 A	with testing-hole	20	28.7 g
02072.000000	E214019	DIII	E33	500 V	500 V	63 A	with testing-hole	20	27.7 g



00590.000200

D Screw caps, porcelain-design

Catalog number	Item number	Size	Thread	Rated voltage AC (IEC)	Rated voltage DC (IEC)	Rated current I _n	Package	Weight
with testing-hole								
00590.000200	L217130	DII	E27	500 V	500 V	25 A	20	38.8 g
00591.000200	R217641	DIII	E33	500 V	500 V	63 A	20	64.6 g
with testing-hole and stainless steel								
00690.000200	E218619	DII	E27	500 V	500 V	25 A	20	41 g
00691.000200	B213004	DIII	E33	500 V	500 V	63 A	20	37.3 g
without testing-hole								
00589.000000	Z216613	NDZ	E16	500 V	500 V	25 A	50	21.2 g
00690.000000	Z218108	DII	E27	500 V	500 V	25 A	20	39.5 g
00691.000000	F211973	DIII	E33	500 V	500 V	63 A	20	60 g
long design								
00605.000000	L218671	DIII	E33	690 V	-	16 A	25	0.11 kg



00690.000200



00589.000000



00605.000000

PRODUCT RANGE



01657.002000



01658.063000

D Screw gauge pieces

Catalog number	Item number	Size	Rated current I _n	Colour	Package	Weight
01657.002000	A219190	DII	2 A	pink	25	14.2 g
01657.004000	D219722	DII	4 A	brown	25	14.2 g
01657.006000	L222167	DII	6 A	green	25	14.2 g
01657.010000	F222921	DII	10 A	red	25	14.2 g
01657.016000	P200711	DII	16 A	grey	25	14.2 g
01657.020000	D201253	DII	20 A	blue	25	14.2 g
01657.025000	P201769	DII	25 A	yellow	25	14.2 g
01658.035000	C207071	DIII	35 A	black	25	22 g
01658.050000	E211512	DIII	50 A	white	25	22 g
01658.063000	J212022	DIII	63 A	copper	25	22 g



01652.002000

D Gauge rings

Catalog number	Item number	Size	Rated current I _n	Colour	Package	Weight
01652.002000	W215092M	DII	2 A	pink	25	4.9 g
01652.004000	W215598M	DII	4 A	brown	25	4.9 g
01652.006000	D216111M	DII	6 A	green	25	4.9 g
01652.010000	A216614M	DII	10 A	red	25	4.9 g
01652.016000	M217131M	DII	16 A	grey	25	4.9 g
01652.020000	S217642M	DII	20 A	blue	25	4.9 g
01652.025000	A218155M	DII	25 A	yellow	25	4.9 g
01653.025000	Q201770M	DIII	25 A	yellow	25	7.6 g
01653.035000	L207079M	DIII	35 A	black	25	7.6 g
01653.050000	F211513M	DIII	50 A	white	25	7.6 g



01657.993000

Key for D Gauge pieces

Catalog number	Item number	Size	Package	Weight
01657.993000	E216112	DII/DIII	10	22.5 g



00181.900000

D Touch protection rings

Catalog number	Item number	Size	Package	Weight
00181.900000	K222120	DII	50	15 g
00182.900000	A222870	DIII	40	18.7 g



00581.000000

D Adapter fittings

Catalog number	Item number	Size	Design	Package	Weight
00581.000000	C212545	DII -> DIII	for DII fuse-links to DIII fuse-bases	24	14.1 g

PRODUCT RANGE



02071.800000

D Locking caps

Catalog number	Item number	Size	Thread	Rated current I _n	Colour	Design	Package	Weight
02071.800000	B216615E	DII	E27	25 A	black	EVU, for authorized personal only	5	32.7 g
02071.810000	N217132E	DII	E27	25 A	red	Industrie	5	32.7 g
02072.800000	T217643E	DIII	E33	63 A	black	EVU, for authorized personal only	5	38.5 g
02072.810000	B218156E	DIII	E33	63 A	red	Industrie	5	38.5 g



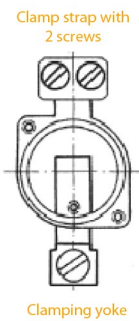
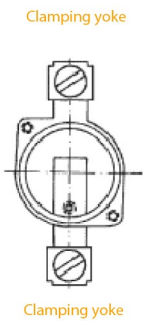
01714.820000

D Locking keys

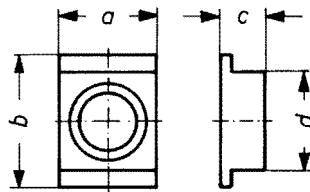
Catalog number	Item number	Features	Design	Package	Weight
01714.820000	K213564A	-	for authorized personnel only (Utilities)	1	37 g
01714.830000	J214069A	Special key for locking caps	-	1	43 g

DIMENSIONS

Terminal type



D Protection cover

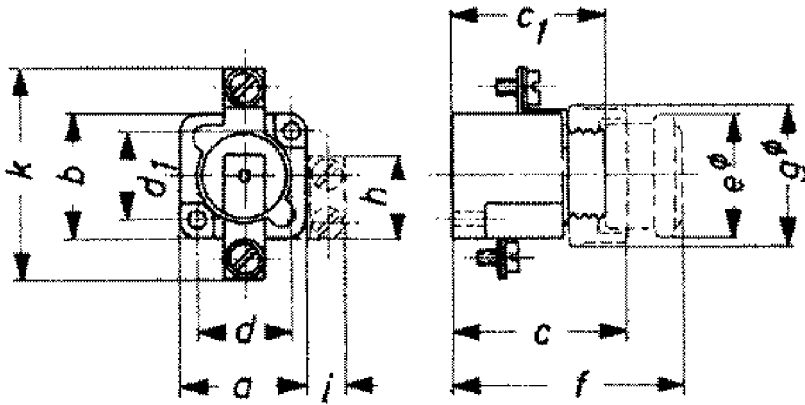


Article Number	a	b	c	d
00685.700000	40	90	22	45
00686.700000	50	90	22	45
00685.709000	45	90	22	45
00686.709000	54	90	22	45
00625.700000	107	107	51	
00626.700000	127	130	51	

Dimensions in mm

DIMENSIONS

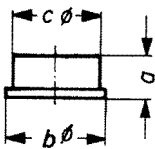
D Fuse-bases single-pole



Article Number	Size	Mounting	Touch protection cover	a	b	c	d	d1	e	f	g	h	k
00685.110000	DII	snap-on	Yes	38	40	60	29	27	38	82	43	60	
00686.410000	DIII	snap-on	Yes	38	40	60	29	27	38	82	43	60	
00685.100000	DII	snap-on	No	38	40	60	29	27	38	82	43	60	
00686.400000	DIII	snap-on	No	38	40	60	29	27	38	82	43	60	
00081.110000	DII	screw	Yes	46	44	57	35	33.5	48	84	52	73	
00072.410000	DIII	screw	Yes	46	44	57	35	33.5	48	84	52	73	
00081.100000	DII	screw	No	46	44	57	35	33.5	48	84	52	73	
00072.400000	DIII	screw	No	46	44	57	35	33.5	48	84	52	73	

Dimensions in mm

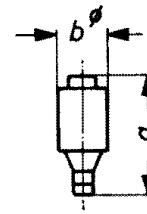
D touch-protection-rings



Article Number	a	b	c
00181.900000	17,5	44.5	40.5
00182.900000	19	54	50.5

Dimensions in mm

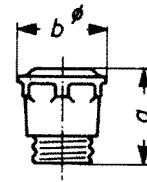
D fuse-links



Size	a	b
NDZ	50	12
DII	50	22
DIII	50	27

Dimensions in mm

D screw-caps



Article Number	a	b
00590.000200	42	34
00591.00200	43	42
00589.000000	34	27
00605.000000	65	42.5
00690.000000	42	34
00691.000000	43	42
02071.000000	42	33
02072.000000	43	40

Dimensions in mm

D fuse-links flink

500VAC/500VDC

LOW VOLTAGE IEC FUSES

DIN LV FUSE-LINKS D



The D fuse-system is the first generation of screw fuse-system in the German DIN standard. It is still used in many installations.

Applications are low voltage distribution units, where non-trained persons are allowed to change the fuse-links.

The D flink fuse range comprises the sizes NDZ, DII, DIII.

The range of applications for D flink fuse-links is the protection of equipments. The D flink fuse-links, not standardized by the IEC, are fast fuse-links whereas D gG fuse links are considered in comparison as slow fuse-links.

TECHNICAL DATA OVERVIEW

Voltage AC	500 VAC
Voltage DC	500 VDC
Ampere Range (A)	2 ... 63 A
Product Size	NDZ, DII, DIII

FEATURES & BENEFITS

- Insulated body suitable for high mechanical and thermal impacts
- Top and bottom contacts made of nickel plated copper alloy
- Safe cut-off short circuits and over currents due to special design of fuse element
- Clear indication of operation condition due to coloured indicator on top contact
- Low power dissipation
- Optimized size
- Resistant to aging
- Free of lead, cadmium, mercury, chrome 6 (rohs conformity)

APPLICATIONS

- House incoming units
- Meter distribution units
- Distribution cabinets
- Installation cabinets
- Fuse boxes



D fuse-links flink

500VAC/500VDC

PRODUCT RANGE

Size NDZ flink



NDZFK50V2

Catalog number	Item number	Rated voltage AC (IEC)	Rated voltage DC (IEC)	Rated current I _n	Colour	Package	Weight
NDZFK50V2	C222918	500 V	500 V	2 A	pink	25	12.9 g
NDZFK50V4	L200708	500 V	500 V	4 A	brown	25	12.9 g
NDZFK50V6	A201250	500 V	500 V	6 A	green	25	12.9 g
NDZFK50V10	L201766	500 V	500 V	10 A	red	25	12.9 g
NDZFK50V16	D207049	500 V	500 V	16 A	grey	25	12.9 g
NDZFK50V20	B211509	500 V	500 V	20 A	blue	25	12.9 g
NDZFK50V25	Y212541	500 V	500 V	25 A	yellow	25	12.9 g

Size DII flink



DIIFK50V2

Catalog number	Item number	Rated voltage AC (IEC)	Rated voltage DC (IEC)	Rated current I _n	Colour	Package	Weight
DIIFK50V2	E213559	500 V	500 V	2 A	pink	25	26.8 g
DIIFK50V4	D214064	500 V	500 V	4 A	brown	25	26.8 g
DIIFK50V6	L214577	500 V	500 V	6 A	green	25	26.8 g
DIIFK50V10	S215089	500 V	500 V	10 A	red	25	26.8 g
DIIFK50V10/6F	X218152	500 V	500 V	10 A	red	25	26.8 g
DIIFK50V16	A216108	500 V	500 V	16 A	grey	25	26.8 g
DIIFK50V20	J217128	500 V	500 V	20 A	blue	25	26.8 g
DIIFK50V25	P217639	500 V	500 V	25 A	yellow	25	26.8 g

Size DIII flink



DIIIFK50V35

Catalog number	Item number	Rated voltage AC (IEC)	Rated voltage DC (IEC)	Rated current I _n	Colour	Package	Weight
DIIIFK50V35	J218669	500 V	500 V	35 A	black	25	52.8 g
DIIIFK50V50	J222165	500 V	500 V	50 A	white	25	52.8 g
DIIIFK50V63	M200709	500 V	500 V	63 A	copper	25	52.8 g

D fuse-links gG

500 to 690VAC/500VDC

LOW VOLTAGE IEC FUSES

DIN LV FUSE-LINKS D



The D fuse-system is the first generation of screw fuse-system in the German DIN standard. It is still used in many installations.

Applications are low voltage distribution units, where non-trained persons are allowed to change the fuse-links.

The D fuse range comprises the sizes NDZ, DII, DIII, DIV, DV.

The range of applications for D fuse-links is the protection of cables and power lines. They limit and cut-off unacceptable overcurrents and short-circuit currents up to their nominal breaking capacity. D fuse-links "gG" also protect equipments and installations against dynamic effects of high short-circuit currents.

TECHNICAL DATA OVERVIEW

Voltage Range AC	500 ... 690 VAC
Voltage DC	500 VDC
Ampere Range (A)	2 ... 200 A
Speed/Characteristic	gG
I.R. AC (IEC)	50 kA
Product Size	NDZ to DV

FEATURES & BENEFITS

- Insulated body suitable for high mechanical and thermal impacts
- Top and bottom contacts made of nickel-plated copper alloy
- Safe cut-off short circuits and overcurrents due to special design of fuse element
- Clear indication of operation condition due to colored indicator on top contact
- Low power dissipation
- Optimized size
- Resistant to aging
- Free of lead, cadmium, mercury, chrome 6 (RoHS conformity)

APPLICATIONS

- House incoming units
- Meter distribution units
- Distribution cabinets
- Installation cabinets
- Fuse boxes

STANDARDS

- DIN VDE 0636-301



PRODUCT RANGE

Size NDZ gG



NDZGG50V16

Catalog number	Item number	Rated voltage AC (IEC)	Rated voltage DC (IEC)	Rated current I _n	Colour	Package	Weight
NDZGG50V2	W212539	500 V	500 V	2 A	pink	25	13.3 g
NDZGG50V4	G213055	500 V	500 V	4 A	brown	25	13.3 g
NDZGG50V6	C213557	500 V	500 V	6 A	green	25	13.3 g
NDZGG50V10	B214062	500 V	500 V	10 A	red	25	13.3 g
NDZGG50V16	J214575	500 V	500 V	16 A	grey	25	13.3 g
NDZGG50V20	Q215087	500 V	500 V	20 A	blue	25	13.3 g
NDZGG50V25	Q215593	500 V	500 V	25 A	yellow	25	13.3 g

Size DII gG



DIIIGG50V6

Catalog number	Item number	Rated voltage AC (IEC)	Rated voltage DC (IEC)	Rated current I _n	Colour	Power dissipation at I _n	Package	Weight
DIIIGG50V2	Z219718	500 V	500 V	2 A	pink	2.1 W	25	26.8 g
DIIIGG50V4	G222163	500 V	500 V	4 A	brown	2 W	25	26.8 g
DIIIGG50V6	B222917	500 V	500 V	6 A	green	1.2 W	25	26.8 g
DIIIGG50V10	K200707	500 V	500 V	10 A	red	1.6 W	25	26.8 g
DIIIGG50V10/6F	D213558	500 V	500 V	10 A	red	1.6 W	25	26.8 g
DIIIGG50V16	K201765	500 V	500 V	16 A	grey	2.4 W	25	26.8 g
DIIIGG50V20	A211508	500 V	500 V	20 A	blue	2.1 W	25	26.8 g
DIIIGG50V25	X212540	500 V	500 V	25 A	yellow	3.5 W	25	26.8 g

Size DIII gG



DIIIIGG50V63

Catalog number	Item number	Rated voltage AC (IEC)	Rated voltage DC (IEC)	Rated current I _n	Colour	Power dissipation at I _n	Package	Weight
DIIIIGG50V32	M229091	500 V	500 V	32 A	black	-	25	51.6 g
DIIIIGG50V35	C214063	500 V	500 V	35 A	black	3.7 W	25	51.6 g
DIIIIGG50V50	K214576	500 V	500 V	50 A	white	5.2 W	25	51.6 g
DIIIIGG50V63	R215088	500 V	500 V	63 A	copper	6 W	25	51.6 g

Size DIII gG 690VAC



DIIIIGG69V2

Catalog number	Item number	Rated voltage AC (IEC)	Rated current I _n	Colour	Power dissipation at I _n	Package	Weight
DIIIIGG69V2	R215594	690 V	2 A	pink	-	25	73.58 g
DIIIIGG69V4	Z216107	690 V	4 A	brown	10 W	25	73.58 g
DIIIIGG69V6	W216610	690 V	6 A	green	12 W	25	73.58 g
DIIIIGG69V10	H217127	690 V	10 A	red	17 W	25	73.58 g
DIIIIGG69V16	N217638	690 V	16 A	grey	14 W	25	73.58 g
DIIIIGG69V20	W218151	690 V	20 A	blue	18 W	25	73.58 g
DIIIIGG69V25	H218668	690 V	25 A	yellow	20 W	25	73.58 g
DIIIIGG69V35	X219187	690 V	35 A	black	23 W	25	73.58 g
DIIIIGG69V50	A219719	690 V	50 A	white	36 W	25	73.58 g
DIIIIGG69V63	H222164	690 V	63 A	copper	55 W	25	73.58 g

D fuse-links gG

500 to 690VAC/500VDC

PRODUCT RANGE

Size DIV gG



DIVGG50V80

Catalog number	Item number	Rated voltage AC (IEC)	Rated voltage DC (IEC)	Rated current I _n	Colour	Power dissipation at I _n	Package	Weight
DIVGG50V80	V216609	500 V	500 V	80 A	silver	7.9 W	10	0.11 kg
DIVGG50V100	M217637	500 V	500 V	100 A	red	8.9 W	10	0.12 kg

Size DV gG



DVGG50V125

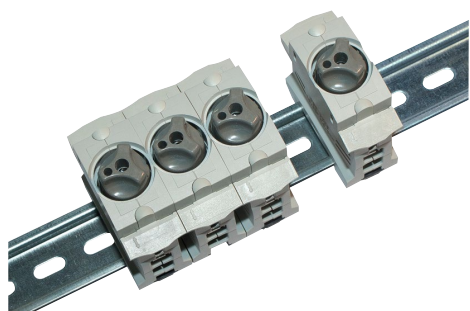
Catalog number	Item number	Rated voltage AC (IEC)	Rated voltage DC (IEC)	Rated current I _n	Colour	Power dissipation at I _n	Package	Weight
DVGG50V125	V218150	500 V	500 V	125 A	yellow	10 W	5	0.20 kg
DVGG50V160	G218667	500 V	500 V	160 A	copper	16.5 W	5	0.20 kg
DVGG50V200	W219186	500 V	500 V	200 A	blue	18 W	5	0.20 kg

INNOZED®

DO fuse-bases with touch protection

FUSE HOLDERS, FUSE BASES AND SUPPORTS

IEC DO & D FUSE BASES



INNOZED® is a fuse base for DO fuse-links, sizes D01 and D02. It is designed for a fast mounting on DIN-rail in distribution boards and panels, for residential and industrial applications.

INNOZED® has an integrated touch protection cover, that prevents from electrocution in built-in status. The use of comb-type busbars allows the positioning of the wires to be visually controlled. The use of wiring bus bars in the lower area of the terminal allows an easier insertion of the wires and visual control of the termination points at the same time.

INNOZED® allows a flexibility in the connection configuration. The fixing clamps consist of two separate compartments, that ensures a secure connection of two different wires. It is possible to use wires with different cross-sections from 4mm² to 35mm² or two similar wires up to 16mm² cross section.

TECHNICAL DATA OVERVIEW

Voltage AC	400 VAC
Voltage DC	250 VDC
Amper (A)	63 A
Ampere Range (A)	16 ... 63 A
SCCR	50 kA (AC), 8 kA (DC)
Mounting	Installation on to DIN rails to EN 60715
Body Material	plastic, silicon and halogen free
Contact Materials	Screws +/- (PZ2), galvanized, chromized (Chrome 3)
Product Size	D01,D02
Number of poles	1-pole, 3-pole

FEATURES & BENEFITS

- Single pole and triple pole design
- Snap on fixing for DIN-rails 35mm
- Multi termination of 2 conductors (35mm² + 16mm²) or comb bus bar and cable possible
- Frame clamp 1.5–35 mm² fine stranded for direct clamping or with wire end sleeve, M = 3.0 – 4.0 Nm
- Space saving fuse base
- High safety during installation, operation and maintenance
- Extensive touch protection due to integrated cover
- Double function clamp up to 35mm²
- Large termination area and good termination conditions for outgoing feeders
- Installation in 45mm standard cut out
- Materials used are synthetic, free of silicon and halogen

APPLICATIONS

- Distribution boards for residential use
- panel boards for industrial use

STANDARDS

- IEC/EN 60269-3
- VDE 0636-3



PRODUCT RANGE



04724.000000

INNOZED D01 16 A, 400 V AC single pole E14

Catalog number	Item number	Design	Package	Weight
04724.000000	W1032489	both sides double function clamp 1.5-35 mm ²	9	83.3 g



04734.000000

INNOZED D01 16 A, 400 V AC triple pole E14

Catalog number	Item number	Design	Package	Weight
04734.000000	X1032490	both sides double function clamp 1.5-35 mm ²	3	0.24 kg



04725.000000

INNOZED D02 63 A, 400 V AC single pole E18

Catalog number	Item number	Design	Package	Weight
04725.000000	Y1032491	both sides double function clamp 1.5-35 mm ²	9	80.8 g



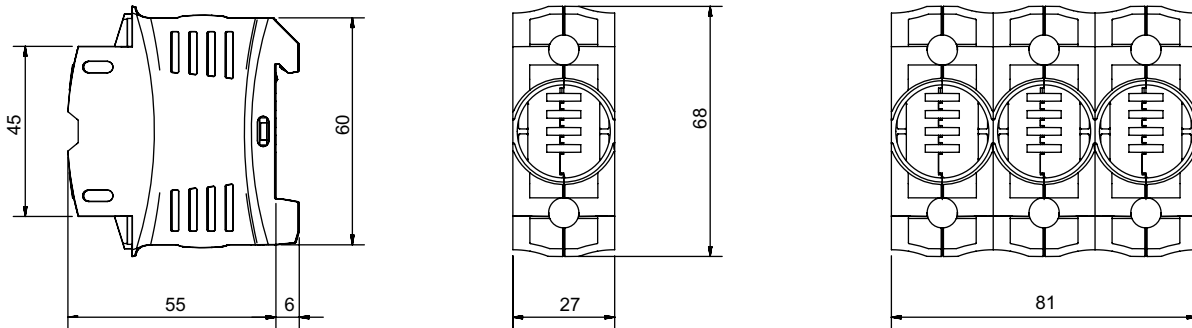
04735.000000

INNOZED D02 63 A, 400 V AC triple pole E18

Catalog number	Item number	Design	Package	Weight
04735.000000	Z1032492	both sides double function clamp 1.5-35 mm ²	3	0.24 kg

DIMENSIONS

INNOZED® DO fuse base with touch protection



Dimensions in mm

ACCESSORIES

Screw caps



01714.000200



01715.000000



01711.000200



01770.000200

Catalog number	Item number	Features	Package	Weight
DO screw caps 400VAC synthetic				
01714.000200	E212501	D01, E14, 16A, with testing hole	20	11.8 g
01715.000200	P211981	D02, E18, 63A, with testing hole	20	11.6 g
11714.000220	R214536	D01, E14, 16A, with sealing and testing hole	20	11.6 g
11715.000220	S214537	D02, E18, 63A, with sealing and testing hole	20	11.6 g
01715.000000	L206435	D02, E18, 63A, without testing hole	20	12 g
01715.890200	M214026	D02, E18, 63A, with adapter insert for fuse links size D01	20	12.4 g
DO screw caps 400/440 VAC, 250 V DC porcelain, with removal grips				
01711.000200	T215044	D02, E18, 63A, with testing hole	20	18.5 g
01770.000200	F1033740	D01, E14, 16A, with testing hole	20	16.4 g

DO cartridge ring adapter inserts D01 E14



01705.006000



01705.010000

Catalog number	Item number	Features	Package	Weight
DO cartridge ring adapter inserts D01 (E14)				
01705.002000	J216576	2A, pink	50	0.4 g
01705.004000	J219681	4A, brown	50	0.4 g
01705.006000	P206438	6A, green	50	0.4 g
01705.010000	M213014	10A, red	50	0.4 g

ACCESSORIES



01706.002000



01706.020000

DO cartridge ring adapter inserts D02 E18

Catalog number	Item number	Application	Features	Package	Weight
DO cartridge ring adapter inserts D02 (E18)					
01706.002000	K216577	For D01 fuse links in D02 fuse bases	2A, pink	50	0.6 g
01706.004000	S222127	For D01 fuse links in D02 fuse bases	4A, brown	50	0.6 g
01706.006000	R211983	For D01 fuse links in D02 fuse bases	6A, green	50	0.6 g
01706.010000	H216069	For D01 fuse links in D02 fuse bases	10A, red	50	0.6 g
01706.016000	Q218629	For D01 fuse links in D02 fuse bases	16A, grey	50	0.5 g
01706.020000	S200668	For D02 fuse links	20A, blue	50	0.5 g
01706.025000	R213524	For D02 fuse links	25A, yellow	50	0.6 g
01706.035000	J216070	For D02 fuse links	35A, black	50	0.5 g
01706.050000	R218630	For D02 fuse links	50A, white	50	0.6 g



02901.000000



02901.350000



02903.165000



02963.000000



22963.003000



22963.363000

Wiring bars / Insulated bus bars

Catalog number	Item number	Design	Package	Weight
Wiring bars / Insulated Busbars				
02901.000000	E302891	end cap for single pole wiring bus bar	10	0.4 g
02901.350000	K1002418	endcover for triple pole wiring bus bar	10	0.5 g
02903.165000	G302893	end cap for triple pole wiring bus bars up to 16 mm ²	10	1.8 g
02903.350000	R302902	end cap for triple pole wiring bus bars up to 35 mm ²	10	1.5 g
02963.000000	M215107	single pole, 16 mm ² , partition 27 mm (distance of poles), peg design, L-shaped	5	0.17 kg
22963.003000	K302873	triple pole, 16 mm ² , partition 27 mm (distance of poles), peg design, L-shaped	5	0.66 kg
22963.361000	J1002417	single pole, 35 mm ² , partition 27 mm (distance of poles), peg design, L-shaped	5	0.47 kg
22963.363000	L302874	triple pole, 35 mm ² , partition 27 mm (distance of poles), peg design, L-shaped	5	1.21 kg

LINOCUR®

Size D02 63A 230VAC/440VAC

IEC FUSE SWITCH DISCONNECTORS

D0 FUSE COMBINATION UNITS



The D0 Linocur® is a combination of switch disconnecter fuse and Neozed® 63A fuse-link, equipped with significant safety characteristics and sophisticated switching and terminal technology.

The power dissipation of Neozed® fuse-links leads to internal heating in the Linocur® device. Special design measures have been implemented in the development of Linocur® in order to prevent the device from overheating and avoid the unwanted, premature operation of the fuse-link:

- generously sized, solid copper strip conductors
- highly sprung foot contact
- wide area of heat transfer through contact with the screw cap
- wide area of contact at the foot contact
- special contacts which share functions

Thanks to this design, Linocur® features one of the lowest power dissipation values on the market for D0 fuse-combination units devices.

FEATURES & BENEFITS

- Lowest Power Dissipation
- Remote fuse monitoring (optional)
- Highly user-friendly and safe changing of the fuse
- Bayonett design of the screw cap for quick changing of the fuse
- Easy installation (feeding from above and below)
- Double clamp connection for in/output
- Modern design
- Modular system: 1 to 3+N poles, available with and without gauge piece

APPLICATIONS

- Low voltage power distribution for:
 - process industries
 - commercial
 - residential.

STANDARDS

- EN/IEC 60947-3
- DIN VDE 43880
- DIN VDE 0660 Part 107
- DIN VDE 0638
- DIN VDE 0636 Part 3
- IEC 60269-3



TECHNICAL DATA OVERVIEW

Voltage	1 pole AC 230V marine application AC 250V 2-, 3-, 4- pole AC 400V marine application AC 440V per pole DC 65V
Utilisation category	gG, aM and gR only with restrictions
Ampere Range (A)	20 ... 63 A
Breaking capacity	50 kA
Protection	IP 20
SCCR	AC 22B AC 400V 63A DC 22B DC 65V/pole AC 23B AC 400V 50A AC 23B AC 440V 35A
Mounting	DIN rail acc. EN 60715
Product Size	D02
Number of poles	1-, 2-, 3-polar 2-polar (1+N) 4-polar (3+N)
Operating temperature	-20°C up to 60°C
Pollution degree	3
Overtoltage category	IV
Rated frequency	50 ... 60 Hz
Rated impulse withstand voltage U_{imp}	6 kV
Cable termination	<p>Flexible wiring with conductor end sleeves</p> <ul style="list-style-type: none"> - two wires of same cross-section: up to max. 16 mm² - two different wires: * 25 mm² and max. 6 mm² * 35 mm² and max. 4 mm² - with paired conductor end sleeves: up to max. 16 mm² <p>Flexible, thin-wire wires without conductor end sleeves</p> <ul style="list-style-type: none"> - two wires of same cross-section: up to max. 16 mm² - two different wires: * 25 mm² and max. 16 mm² * 35 mm² and max. 10 mm² <p>Short-circuit resistant wires</p> <ul style="list-style-type: none"> - two wires of same cross-section: up to max. 6 mm²
Connection	double cage 35mm ²
Tightening torque (recommended)	3,5Nm
Power dissipation	63A: phase=1.8W, neutral=1.4W

PRODUCT RANGE



05861.063000



05863.063000



05864.063000



05863.050000



05863.063040

DO Linocur® D02 230 to 400VAC, 65VDC per pole

Catalog number	Item number	Rated current I _n	Number of poles/ phases	Width	Design	Cross section	Package	Weight
05861.063000	Z1012620	63 A	1	27 mm	-	35 mm ²	3	0.21 kg
05862.063000	J1012606	63 A	2	54 mm	-	35 mm ²	2	0.32 kg
05863.063000	B1012622	63 A	3	81 mm	-	35 mm ²	1	0.64 kg
05861.063100	H1012628	63 A	1+N	54 mm	The N conductor is leading on switch-on and lagging on switch-off Not to be used for DC applications	35 mm ²	2	0.32 kg
05863.063100	E1012602	63 A	3+N	108 mm	The N conductor is leading on switch-on and lagging on switch-off Not to be used for DC applications	35 mm ²	1	0.64 kg

DO Linocur® D02 220VDC

Catalog number	Item number	Rated current I _n	Number of poles/ phases	Width	Design	Cross section	Package	Weight
05864.063000	L1012608	63 A	4	108 mm	The four poles must be connected in series, either two poles in the positive connection and two poles in the negative connection or all four poles in either the positive or negative connection.	35 mm ²	1	0.63 kg

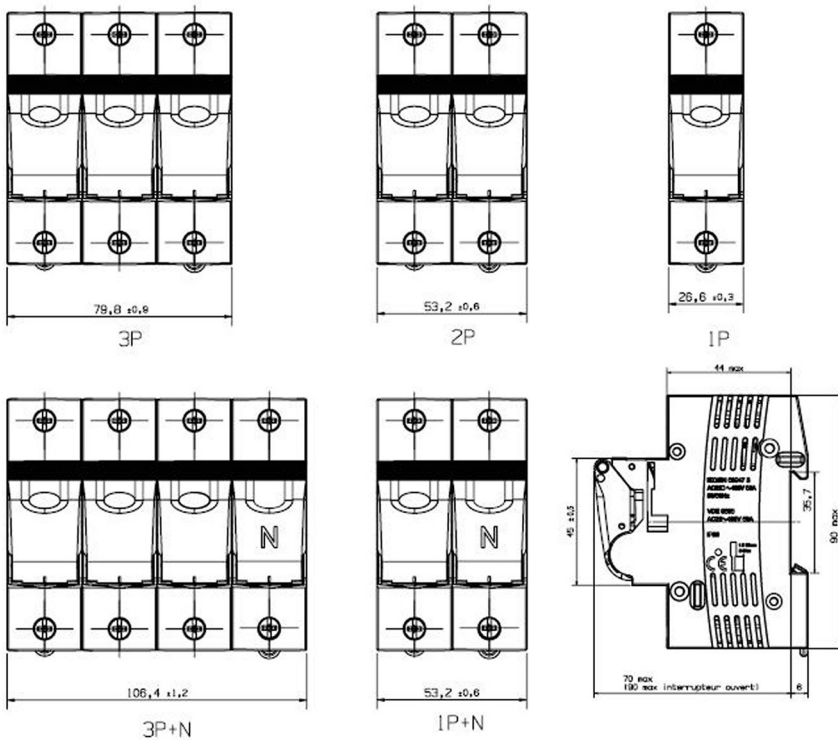
DO Linocur® D02 230VAC to 400VAC, 65VDC per pole, with fuse-links and fixed gauge pieces

Catalog number	Item number	Rated current I _n	Number of poles/ phases	Width	Cross section	Package	Weight
05861.020000	M1012609	20 A	1	27 mm	35 mm ²	3	0.21 kg
05863.020000	E1041881	20 A	3	81 mm	35 mm ²	1	0.64 kg
05861.025000	A1012621	25 A	1	27 mm	35 mm ²	3	0.21 kg
05862.025000	B1012760	25 A	2	54 mm	35 mm ²	2	0.32 kg
05863.025000	G1012627	25 A	3	81 mm	35 mm ²	1	0.64 kg
05861.035000	N1012610	35 A	1	27 mm	35 mm ²	3	0.21 kg
05862.035000	D1012624	35 A	2	54 mm	35 mm ²	2	0.32 kg
05863.035000	E1012625	35 A	3	81 mm	35 mm ²	1	0.64 kg
05861.050000	C1012761	50 A	1	27 mm	35 mm ²	3	0.21 kg
05862.050000	D1012762	50 A	2	54 mm	35 mm ²	2	0.32 kg
05863.050000	P1012611	50 A	3	81 mm	35 mm ²	1	0.64 kg

DO Linocur® D02 250VAC to 440 VAC (suitable for marine application)

Catalog number	Item number	Rated current I _n	Number of poles/ phases	Width	Design	Cross section	Package	Weight
05861.063040	H1012605	63 A	1	27 mm	-	35 mm ²	3	0.14 kg
05862.063040	S1012614	63 A	2	54 mm	Schnappbefestigung auf DIN-Schiene	35 mm ²	2	0.32 kg
05863.063040	J1012629	63 A	3	81 mm	-	35 mm ²	1	0.64 kg
05863.063140	T1012615	63 A	3+N	108 mm	The N conductor is leading on switch-on and lagging on switch-off Not to be used for DC applications	35 mm ²	1	0.25 kg

DIMENSIONS



Dimensions in mm

ACCESSORIES



01713.700000



01715.700000

Screw caps

Catalog number	Item number	Features	Package	Weight
D0 screw caps 400VAC synthetic				
01713.700000	W1016665	Reduction Spring, for the use of D01 fuse-links in the bayonet screw cap size D02	10	1 g
01715.700000	K1015206	Replacement screw cap with sealing hole, without testing hole D02, 63A	10	12.5 g

D0 Screw cap wrench

Catalog number	Item number	Features	Package	Weight
01716.000000	X222936	Screw cap wrench	1	30 g



01716.000000

ACCESSORIES



01715.710000

Locking devices

Catalog number	Item number	Features	Rated current I _n	Design	Package	Weight
01714.830000	J214069A	Special key for locking caps	-	-	1	43 g
01715.710000	L1015207	Locking cap for D0 Linocur, with industrial locking wrench 63A	63 A	-	10	6 g

ACCESSORIES

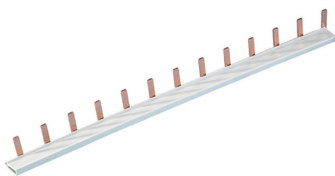
Wiring bars / Insulated bus bars



02901.000000



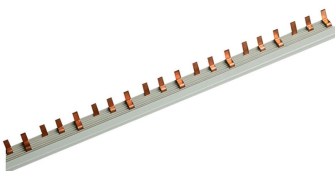
02903.165000



02963.000000



22963.003000



22963.363000

Catalog number	Item number	Design	Package	Weight
Wiring bars / Insulated Busbars				
02901.000000	E302891	end cap for single pole wiring bus bar	10	0.4 g
02903.165000	G302893	end cap for triple pole wiring bus bars up to 16 mm ²	10	1.8 g
02903.350000	R302902	end cap for triple pole wiring bus bars up to 35 mm ²	10	1.5 g
02923.102159	Z302886	Eurovario wiring rail - fixed length and may not be cut length 159mm, cross section 10mm ² 35mm montage rail renpourcé symétrique	5	46.5 g
02923.102243	B302888	Eurovario wiring rail - fixed length and may not be cut length 243mm, cross section 10mm ²	5	81.7 g
02923.109156	D302890	special wiring bar to connect Linocur (27mm) with miniature circuit breakers (18mm) length 140mm, cross section 16mm ²	5	71.1 g
02923.162159	A302887	Eurovario wiring rail - fixed length and may not be cut length 159mm, cross section 16mm ²	5	67.5 g
02923.162243	C302889	Eurovario wiring rail - fixed length and may not be cut length 243mm, cross section 16mm ²	10	0.12 kg
02963.000000	M215107	single pole, 16 mm ² , partition 27 mm (distance of poles), peg design, L-shaped	5	0.17 kg
22963.003000	K302873	triple pole, 16 mm ² , partition 27 mm (distance of poles), peg design, L-shaped	5	0.66 kg
22963.363000	L302874	triple pole, 35 mm ² , partition 27 mm (distance of poles), peg design, L-shaped	5	1.21 kg

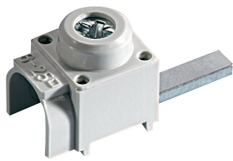
ACCESSORIES



Linocur® 05863.063000
+ 05860.100000

Indication facilities

Catalog number	Item number	Design	Package	Weight
05860.100000	G1015203	Monitoring device for Linocur 2P, 3P, 3P+N Type 1 (switch position), cross section 1,5mm ² , operating voltage 400V +/-10%	1	0.44 kg
05860.200000	H1015204	Monitoring device for Linocur 2P, 3P, 3P+N Type 2 (fuse operation), cross section 1,5mm ² , operating voltage 400V +/-10%	1	0.44 kg
05860.300000	J1015205	Monitoring device for Linocur 2P, 3P, 3P+N Type 3 (switch position and fuse operation), cross section 1,5mm ² , operating voltage 400V +/-10%	1	0.44 kg



02991.000000

Terminal clamps

Catalog number	Item number	Design	Package	Weight
02993.100000	V1007924	Connecting terminal 35mm ² , insulated, long, (required if 35mm ² rail 2296.363000 is used)	10	37.5 g

MULTIFIX® 60

D02 Vertical Switch Fuse Disconnecter 63A, 400VAC, Triple Pole

IEC FUSE SWITCH DISCONNECTORS

D0 FUSE COMBINATION UNITS



MULTIFIX® 60 is a system for energy distribution comprising a variety of modular combinable components. The energy distribution is carried out via copper bus bars in a 60 mm bus bar system up to 630 A, 400 V AC, 500 V AC, 690 V AC, 45–62 Hz. Short circuit withstand tested to VDE 0660 part 500 and IEC 60439-1.

MULTIFIX® 60 is suitable for triple pole, quadruple pole and quintuple pole applications.

The components of the MULTIFIX® 60 system are mounted directly without drilling. This method offers high flexibility for extension and alteration of existing installations -> reduced installation time.

D02-vertical switch fuse disconnecter 63A, 400VAC, triple pole is installed on to 60 mm bus bar directly by snap in mode and automatic interlocking. It is designed for bus bars with a width of 12 to 30 mm and a thickness of 5 to 10 mm. Width of switch is only 27 mm which allows space saving, system compatible installation. The Plug technique to EN 50110-1 allows installation without screw caps.

TECHNICAL DATA OVERVIEW

Voltage AC	690 VAC
Amper (A)	63 A
Size per Standard	D02
SCCR	Ue = AC 400 V; Ie = 63 A 50 kA
Switchability	triple pole switching
Product Size	D02
Number of Poles	3

FEATURES & BENEFITS

- For bus bars with width 12 - 30mm and thickness 5 - 10mm
- For direct installation without drilling on to 60mm bus bar systems
- Ease of installation - snap in mode and automatic interlocking
- Blinking indicator for indication of operation of fuse link
- Plug technique to EN 50110-1 - installation with screw caps
- Indication of switch contact
- Padlocking and sealing facility
- Special adapter ring for the use of D01-fuse links (included in delivery)
- For D01- and D02-fuse links and D0-cartridge ring adapter inserts in accordance with IEC/EN 60269-3, VDE 0636-3

APPLICATIONS

- Panel board builders
- Control system engineering
- Industrial plants
- Heating & air conditioning systems

STANDARDS

- IEC/EN 60 947-3
For D01- and D02-fuse links and D0-push-in gauge piece in accordance with IEC/EN 60 269-3, VDE 0636-3



MERSEN reserves the right to change, update or correct, without notice, any information contained in this datasheet.

MULTIFIX® 60

D02 Vertical Switch Fuse Disconnecter 63A, 400VAC, Triple Pole

PRODUCT RANGE



1.002.602

D02-vertical switch fuse disconnecter 63A, 400VAC triple pole

Catalog number	Item number	Poles	Design	Package	Size	Weight
1.002.602	M1006399	3	triple pole switching	3	D02	0.35 kg
1.002.603	P1006401	3	triple pole switching with neutral conductor	3	D02	0.44 kg
1.002.604	R1026620	3	triple pole switching with auxiliary switch	3	D02	0.35 kg
1.002.605	S1026621	3	triple pole switching with neutral conductor and auxiliary switch	3	D02	0.44 kg

DIMENSIONS

D02-vertical switch fuse disconnecter triple pole for direct installation on to 60 mm bus bar system (M02045)



Dimensions in mm

NEOZED D0 fuse-bases 400VAC

FUSE HOLDERS, FUSE BASES AND SUPPORTS

IEC D0 & D FUSE BASES



The D0 fuse-system is installed in low voltage distribution units, where fuse-links are accessible to non trained persons and can also be replaced by them.

This system is the newest generation of screw fuse-system in the german DIN standard and is designed for 400VAC/250VDC networks.

The D0 fuse-bases are available in the sizes D01, D02 and D03.

D0 fuse-bases are used in combination with D0 fuse-links for the protection of cables and power lines. D0 fuse-links limit and cut-off unacceptable overcurrents and short circuit currents up to their nominal breaking capacity. They also protect equipments and installations against dynamic effects of high short circuit currents.

TECHNICAL DATA OVERVIEW

Voltage Range AC	400 ... 440 VAC
Ampere Range (A)	16 ... 100 A
Product Size	D01 to D03

FEATURES & BENEFITS

- Insulated body suitable for high mechanical and thermal impacts
- Top and bottom contacts made of nickel plated copper alloy
- Safe cut-off short circuits and over currents due to special design of fuse element
- Clear indication of operation condition due coloured indicator on top contact
- Low power dissipation
- Optimized size
- Resistant to aging

APPLICATIONS

- House incoming units
- Meter distribution units
- Distribution cabinets
- Installation cabinets
- Fuse boxes

STANDARDS

- DIN VDE 0636-3
- DIN EN 60715



MERSEN reserves the right to change, update or correct, without notice, any information contained in this datasheet.

NEOZED DO fuse-bases 400VAC

PRODUCT RANGE



01720.170000

Size D01 (E14) with touch protection, DIN rail mounting

Catalog number	Item number	Size	Rated voltage AC (IEC)	Rated current I _n	Number of poles/ phases	Connection	Cable termination	Package	Weight
01720.170000	B211463	D01	400 V	16 A	1	Cross section 1,5 to 4 mm ²	Clamping yokes	20	76.7 g
01720.370000	T215550	D01	400 V	16 A	1	Cross section 1,5 to 4 mm ²	Clamping yoke / screw terminal	20	69.5 g
01730.172000	A219144	D01	400 V	16 A	3	Cross section 1,5 to 4 mm ²	Clamping yokes	5	0.22 kg



01720.150000

Size D01 (E14) without touch protection, DIN rail mounting

Catalog number	Item number	Size	Rated voltage AC (IEC)	Rated current I _n	Number of poles/ phases	Connection	Cable termination	Package	Weight
01720.150000	J200660	D01	400 V	16 A	1	Cross section 1,5 to 4 mm ²	Clamping yokes	20	68 g
01730.152000	B216063	D01	400 V	16 A	3	Cross section 1,5 to 4 mm ²	Clamping yokes	5	41 g



01720.100000

Size D01 (E14) without touch protection, screw mounting

Catalog number	Item number	Size	Rated voltage AC (IEC)	Rated current I _n	Number of poles/ phases	Connection	Cable termination	Package	Weight
01720.100000	Z216061	D01	400 V	16 A	1	Cross section 1,5 to 4 mm ²	Clamping yokes	20	3.2 g
01730.100000	K200661	D01	400 V	16 A	3	Cross section 1,5 to 4 mm ²	Clamping yokes	5	40 g



01721.270000

Size D02 (E18) with touch protection, DIN rail mounting

Catalog number	Item number	Size	Rated voltage AC (IEC)	Rated current I _n	Number of poles/ phases	Connection	Cable termination	Package	Weight
01721.270000	M200663	D02	400 V	63 A	1	Cross section 1,5 to 25 mm ²	Clamp straps with 2 screws	20	89.5 g
01721.470000	K218624	D02	400 V	63 A	1	Cross section 1,5 to 25 mm ²	Clamp straps with 2 screws / screw terminal	20	93 g
01731.272000	E222874	D02	400 V	63 A	3	Cross section 1,5 to 25 mm ²	Clamp straps with 2 screws	5	0.28 kg



01721.450000

Size D02 (E18) without touch protection, DIN rail mounting

Catalog number	Item number	Size	Rated voltage AC (IEC)	Rated current I _n	Number of poles/ phases	Connection	Cable termination	Package	Weight
01721.250000	J218623	D02	400 V	63 A	1	Cross section 1,5 to 25 mm ²	Clamp straps with 2 screws	20	72 g
01721.450000	W215552	D02	400 V	63 A	1	Cross section 1,5 to 25 mm ²	Clamp straps with 2 screws / screw terminal	20	72 g
01731.252000	Y217601	D02	400 V	63 A	3	Cross section 1,5 to 25 mm ²	Clamp straps with 2 screws	5	0.25 kg
01731.452000	M211979	D02	400 V	63 A	3	Cross section 1,5 to 25 mm ²	Clamp straps with 2 screws / screw terminal	5	46.2 g

NEOZED D0 fuse-bases 400VAC

PRODUCT RANGE



01721.200000

Size D02 (E18) without touch protection, screw mounting

Catalog number	Item number	Size	Rated voltage AC (IEC)	Rated current I _n	Number of poles/phases	Connection	Cable termination	Package	Weight
01721.200000	M214532	D02	400 V	63 A	1	Cross section 1,5 to 25 mm ²	Clamp straps with 2 screws	20	71.5 g
01721.400000	F213008	D02	400 V	63 A	1	Cross section 1,5 to 25 mm ²	Clamp straps with 2 screws / screw terminal	20	72 g
01731.200000	F216573	D02	400 V	63 A	3	Cross section 1,5 to 25 mm ²	Clamp straps with 2 screws	5	0.24 kg
01731.400000	K206365	D02	400 V	63 A	3	Cross section 1,5 to 25 mm ²	Clamp straps with 2 screws / screw terminal	5	9 g



01722.470000

Size D03 (M30x2) with touch protection, DIN rail mounting

Catalog number	Item number	Size	Rated voltage AC (IEC)	Rated current I _n	Number of poles/phases	Connection	Cable termination	Package	Weight
01722.470000	F216067	D03	400 V	100 A	1	Cross section 10 to 50 mm ²	Clamp straps with 2 screws / screw terminal	10	0.22 kg



01722.450000

Size D03 (M30x2) without touch protection, DIN rail mounting

Catalog number	Item number	Size	Rated voltage AC (IEC)	Rated current I _n	Number of poles/phases	Connection	Cable termination	Package	Weight
01722.450000	Q214535	D03	400 V	100 A	1	Cross section 10 to 50 mm ²	Clamp straps with 2 screws / screw terminal	10	0.2 kg



01722.400000

Size D03 (M30x2) without touch protection, screw mounting

Catalog number	Item number	Size	Rated voltage AC (IEC)	Rated current I _n	Number of poles/phases	Connection	Cable termination	Package	Weight
01722.400000	J213011	D03	400 V	100 A	1	Cross section 10 to 50 mm ²	Clamp straps with 2 screws / screw terminal	10	0.19 kg



01722.480000

Size D03 general fuse-bases with cover cap

Catalog number	Item number	Size	Rated voltage AC (IEC)	Rated current I _n	Number of poles/phases	Connection	Cable termination	Package	Weight
snap-on-fixing									
01722.480000	H219680	D03	400 V	100 A	1	Cross section 10 to 50 mm ²	Clamp straps with 2 screws / screw terminal	10	0.26 kg
screw mounting									
01722.430000	K214024	D03	400 V	100 A	1	Cross section 10 to 50 mm ²	Clamp straps with 2 screws / screw terminal	10	0.25 kg

NEOZED D0 fuse-bases 400VAC

PRODUCT RANGE



01738.250000

Size D02 triple-pole fuse-bases without touch protection

Catalog number	Item number	Size	Rated voltage AC (IEC)	Rated current I _n	Number of poles/phases	Connection	Cable termination	Package	Weight
snap-on fixing									
01738.250000	B218110	D02	400 V	63 A	1	Cross section 1,5 to 25 mm ²	Clamp straps with 2 screws	5	42.6 g
screw mounting									
01738.200000	Z217602	D02	400 V	63 A	1	Cross section 1,5 to 25 mm ²	Clamp straps with 2 screws	5	41.6 g



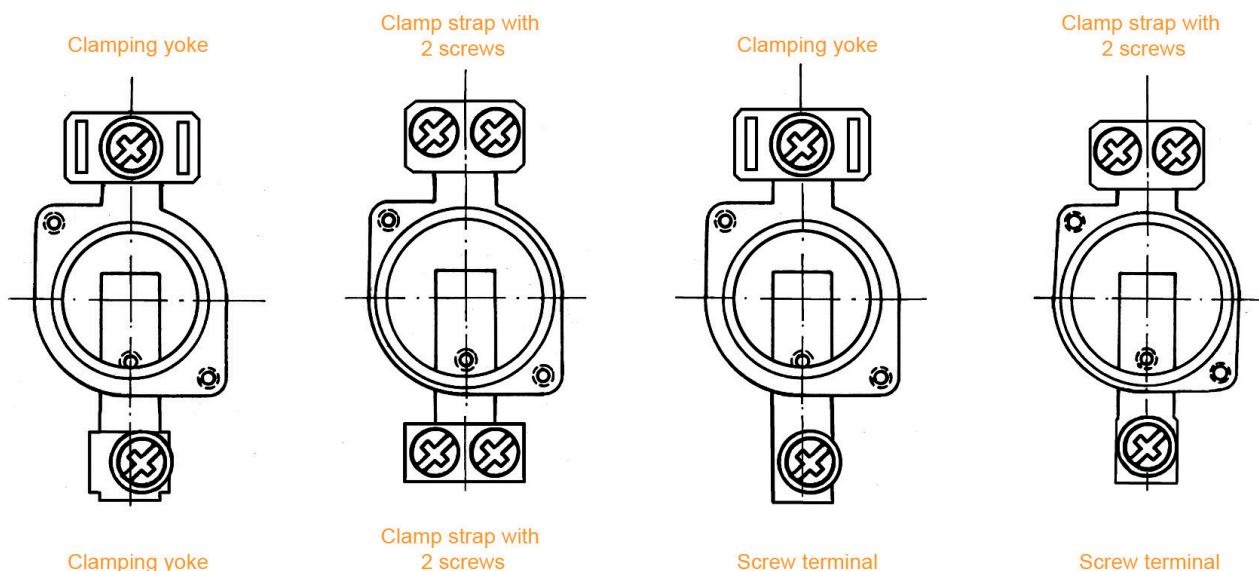
01732.700000

Size D01-D03 cover caps for touch protection

Catalog number	Item number	Size	Number of poles/phases	Package	Weight
Base Size D01/D02, triple-pole (standard), write on					
01732.700000	M216579	D01/02	3	20	22.7 g
Base Size D01/D02, single-pole (standard), write on					
01718.700000	V200670	D01/02	1	50	9.6 g
Base Size D03, single-pole					
01728.000000	V211986	D03	1	40	20.5 g

DIMENSIONS

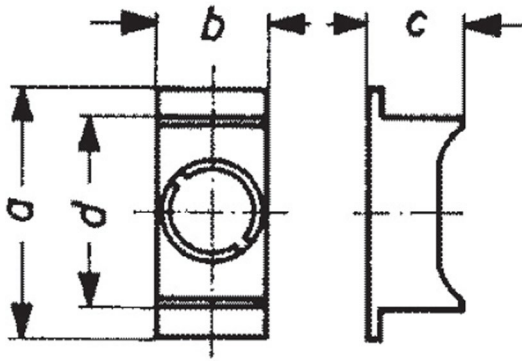
Terminal Type



NEOZED DO fuse-bases 400VAC

DIMENSIONS

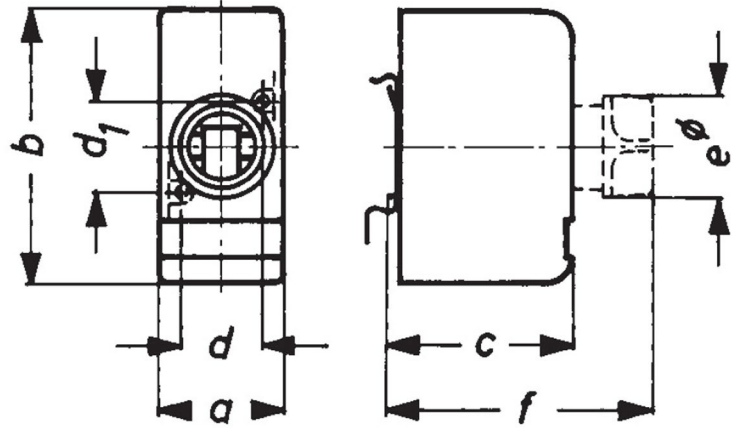
NEOZED protection-cover single pole



Article Number	a	b	c
01718.008000	60	26,8	23
01718.008000	71	26,8	23
01728.000000	60	44	18
01732.700000	71	81	23

Dimensions in mm

NEOZED fuse-bases single pole



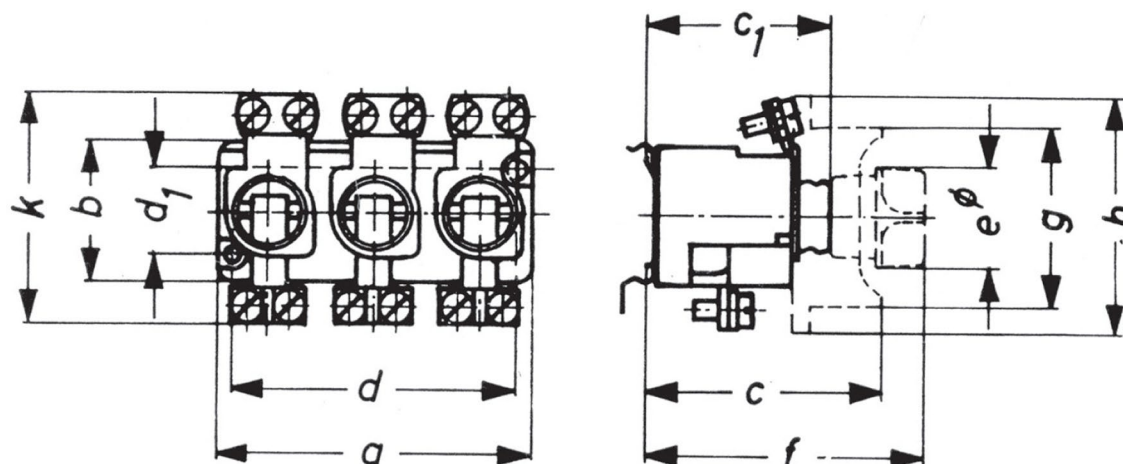
Article Number	a	b	c	d	d1	e∅	f
01722.430000	50	105	48	32	32	40	74
01722.480000	50	105	50	32	32	40	76

Dimensions in mm

NEOZED DO fuse-bases 400VAC

DIMENSIONS

NEOZED fuse-bases triple pole



Article Number	a	b	c	c1	d	d1	e∅	f	g	h	k
01720.100000	26	36	-	39,5	20	22	25,5	64	34∅	-	50,5
01721.200000	26	36	-	39,5	20	22	25,5	64	34∅	-	57,5
01721.400000	26	36	-	39,5	20	22	25,5	64	34∅	-	57,5
01722.400000	44	50	-	44	32	32	40	74	52∅	-	86
01730.100000	81	36	-	39,5	74	22	25,5	64	-	-	50,5
01731.200000	81	36	-	39,5	74	22	25,5	64	-	-	57,5
01731.400000	81	36	-	39,5	74	22	25,5	64	-	-	57,5
01720.150000	26	36	-	41,5	20	22	25,5	66	34∅	-	50,5
01721.250000	26	36	-	41,5	20	22	25,5	66	34∅	-	57,5
01721.450000	26	36	-	41,5	20	22	25,5	66	34∅	-	57,5
01722.450000	44	50	-	46	32	32	40	76	52∅	-	86
01720.170000	27	36	57	41,5	20	22	25,5	66	45	71	50,5
01720.370000	27	36	57	41,5	20	22	25,5	66	45	71	50,5
01721.270000	27	36	57	41,5	20	22	25,5	66	45	71	57,5
01721.470000	27	36	57	41,5	20	22	25,5	66	45	71	57,5
01722.470000	44	50	54,5	46	32	32	40	76	45	71	86
01730.152000	81	36	-	41,5	74	22	25,5	66	-	-	50,5
01731.252000	81	36	-	41,5	74	22	25,5	66	-	-	57,5
01731.452000	81	36	-	41,5	74	22	25,5	66	-	-	57,5
01730.172000	81	36	57	41,5	74	22	25,5	66	45	71	50,5
01731.272000	81	36	57	41,5	74	22	25,5	66	45	71	57,5
01731.472000	81	36	57	41,5	74	22	25,5	66	45	71	57,5
01738.250000	80,5	30	55	39,5	22	20	25,5	64	45	71	44,5
01738.200000	80,5	30	55	39,5	22	20	25,5	64	45	71	44,5

Dimensions in mm

NEOZED D0 fuse-bases 400VAC

ACCESSORIES

Screw caps



01714.000200



01715.000000



01711.000200



01770.000200

Catalog number	Item number	Features	Package	Weight
DO screw caps 400VAC synthetic				
01714.000200	E212501	D01, E14, 16A, with testing hole	20	11.8 g
01715.000200	P211981	D02, E18, 63A, with testing hole	20	11.6 g
11714.000220	R214536	D01, E14, 16A, with sealing and testing hole	20	11.6 g
11715.000220	S214537	D02, E18, 63A, with sealing and testing hole	20	11.6 g
01715.000000	L206435	D02, E18, 63A, without testing hole	20	12 g
01715.890200	M214026	D02, E18, 63A, with adapter insert for fuse links size D01	20	12.4 g
DO screw caps 400/440 VAC, 250 V DC porcelain, with removal grips				
01711.000200	T215044	D02, E18, 63A, with testing hole	20	18.5 g
01712.000200	V215045	D03, M30x2, 100A, with testing hole	10	84 g
01770.000200	F1033740	D01, E14, 16A, with testing hole	20	16.4 g

D0 cartridge ring adapter inserts D01 E14



01705.006000



01705.010000

Catalog number	Item number	Features	Package	Weight
01705.002000	J216576	2A, pink	50	0.4 g
01705.004000	J219681	4A, brown	50	0.4 g
01705.006000	P206438	6A, green	50	0.4 g
01705.010000	M213014	10A, red	50	0.4 g

D0 cartridge ring adapter inserts D02 E18



01706.002000



01706.020000

Catalog number	Item number	Application	Features	Package	Weight
01706.002000	K216577	For D01 fuse links in D02 fuse bases	2A, pink	50	0.6 g
01706.004000	S222127	For D01 fuse links in D02 fuse bases	4A, brown	50	0.6 g
01706.006000	R211983	For D01 fuse links in D02 fuse bases	6A, green	50	0.6 g
01706.010000	H216069	For D01 fuse links in D02 fuse bases	10A, red	50	0.6 g
01706.016000	Q218629	For D01 fuse links in D02 fuse bases	16A, grey	50	0.5 g
01706.020000	S200668	For D02 fuse links	20A, blue	50	0.5 g
01706.025000	R213524	For D02 fuse links	25A, yellow	50	0.6 g
01706.035000	J216070	For D02 fuse links	35A, black	50	0.5 g
01706.050000	R218630	For D02 fuse links	50A, white	50	0.6 g

D0 cartridge ring adapter inserts D03 M30x2



01707.080000

Catalog number	Item number	Features	Package	Weight
01707.080000	T200669	80A, silver	20	1.6 g

NEOZED D0 fuse-bases 400VAC

ACCESSORIES



01714.800000



01715.810000



01714.830000

Locking devices

Catalog number	Item number	Design	Features	Package	Weight
01714.810000	P213062	-	Locking cap for D01 E14 fuse-bases	5	12.4 g
01714.800000	D212546	-	Locking cap for D01 E14 fuse-bases for authorized personal only (EVU)	5	12.2 g
01715.810000	Y215094	-	Locking cap for D02 E18 fuse-bases	5	13.7 g
01715.800000	R214582	-	Locking cap for D02 E18 fuse-bases for authorized personal only (EVU)	5	14 g
01714.830000	J214069A	-	Special key for locking caps	1	45 g



01707.000000



01713.000000

Adapter inserts

Catalog number	Item number	Features	Package	Weight
01707.000000	T211985	Adapter (space holder) for Size D02 fuse-links in Size D03 bases	30	17.4 g
01709.000000	P214028	Adapter for Size D02 fuse-links in Size D03 bases	25	1.3 g
01713.000000	Z215049	Adapter for Size D01 fuse-links in Size D02 bases	50	0.9 g
01733.000000	J218117	Adapter for Size D01 fuse-links in DL-bases	100	0.2 g



01708.000000

Adapter removal and fitting devices

Catalog number	Item number	Features	Package	Weight
01708.000000	J212505	Screw removal and insertion key to remove and insert cartridge ring adapter inserts size D01-D03	1	19.7 g

NEOZED D0 fuse-links aM 400/440VAC

LOW VOLTAGE IEC FUSES

DIN LV FUSE-LINKS D0



The D0 fuse-system is installed in motor circuit protection, where fuse-links are accessible to non trained persons and can also be replaced by them.

The system is the most modern of the screw systems and designed for 400VAC/440VAC networks.

Type “aM” fuse-links are partial-range breaking capacity fuse-links, used to protect motor circuits as they are strongly current-limiting and have low power losses.

They limit and cut off short circuit currents from 6.3 times I_n up to their nominal breaking capacity.

TECHNICAL DATA OVERVIEW

Voltage Range AC	400 ... 440 VAC
Ampere Range (A)	20 ... 35 A
Speed/Characteristic	aM
I.R. AC (IEC)	50 kA
Product Size	D02

FEATURES & BENEFITS

- Insulated body suitable for high mechanical and thermal impacts
- Top and bottom contacts made of nickel plated or silver plated copper alloy
- Safe cut-off short circuits due to special design of fuse element
- Clear indication of operation condition due to coloured indicator on top contact
- Low power dissipation
- Optimized size
- Resistant to aging

APPLICATIONS

- Motor circuit protection

STANDARDS

- DIN VDE 0636-3



NEOZED D0 fuse-links aM 400/440VAC

PRODUCT RANGE

Size D02 (E18) aM



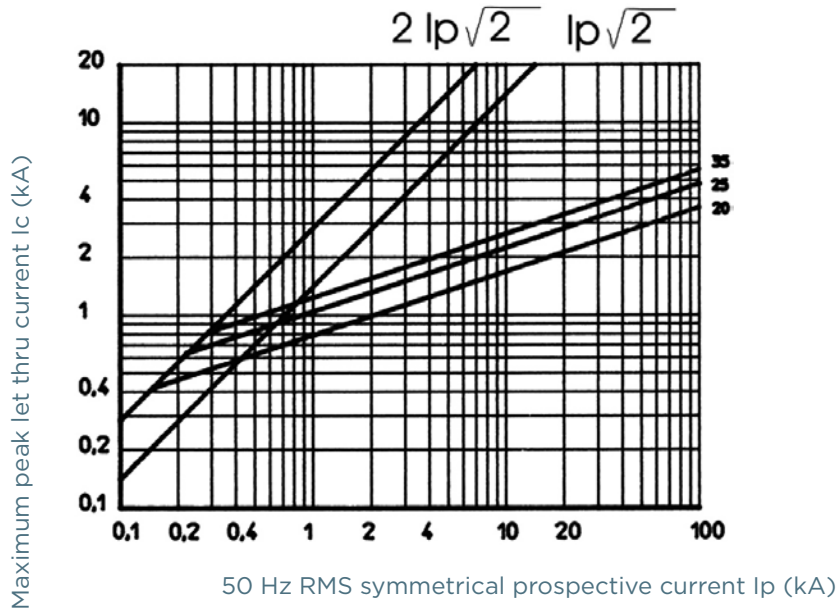
D02AM44V25

Catalog number	Item number	Rated voltage AC (IEC)	Rated current I _n	Colour	Power dissipation at I _n	Utilisation category	Package	Weight
D02AM44V20	H211607	440 V	20 A	blue	2.5 W	aM	10	13.2 g
D02AM44V25	F212640	440 V	25 A	yellow	3 W	aM	10	13.2 g
D02AM44V35	J213655	440 V	35 A	black	4 W	aM	10	13.2 g

NEOZED D0 fuse-links aM 400/440VAC

CUT-OFF CURRENT CHARACTERISTIC

NEOZED D0 fuse-links aM 400/440VAC



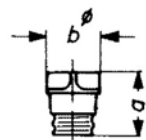
DIMENSIONS

NEOZED Fuse-Links

Size	a	b
D02	36 mm	15 mm

Dimensions in mm

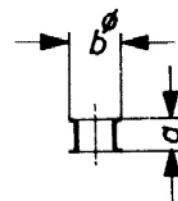
NEOZED Screw Caps



Article Number	a	b
01714.000000	29,5	23
01715.000000	29,5	23
01710.000000	31	25
01711.000000	31	25
01712.000000	37	40

Dimensions in mm

NEOZED Adapter Inserts



Article Number	a	b
01705.000000	10	12
01706.000000	10	16
01707.000000	10	27

Dimensions in mm

NEOZED D0 fuse-links aM 400/440VAC

ACCESSORIES



01715.000000



01711.000200

Screw caps

Catalog number	Item number	Features	Package	Weight
D0 screw caps 400VAC synthetic				
01715.000200	P211981	D02, E18, 63A, with testing hole	20	11.6 g
11715.000220	S214537	D02, E18, 63A, with sealing and testing hole	20	11.6 g
01715.000000	L206435	D02, E18, 63A, without testing hole	20	12 g
D0 screw caps 400/440 VAC, 250 V DC porcelain, with removal grips				
01711.000200	T215044	D02, E18, 63A, with testing hole	20	18.5 g

D0 cartridge ring adapter inserts D02 E18



01706.020000

Catalog number	Item number	Application	Features	Package	Weight
D0 cartridge ring adapter inserts D02 (E18)					
01706.020000	S200668	For D02 fuse links	20A, blue	50	0.5 g
01706.025000	R213524	For D02 fuse links	25A, yellow	50	0.6 g
01706.035000	J216070	For D02 fuse links	35A, black	50	0.5 g

Locking devices



01715.810000

Catalog number	Item number	Features	Design	Package	Weight
01715.800000	R214582	Locking cap for D02 E18 fuse-bases for authorized personal only (EVU)	-	5	14 g
01715.810000	Y215094	Locking cap for D02 E18 fuse-bases	-	5	13.7 g

Adapter inserts

Catalog number	Item number	Features	Package	Weight
01709.000000	P214028	Adapter for Size D02 fuse-links in Size D03 bases	25	1.3 g

NEOZED DO fuse-links gG 400/440VAC

LOW VOLTAGE IEC FUSES

DIN LV FUSE-LINKS DO



The DO fuse-system is installed in low voltage distribution units, where fuse-links are accessible to non trained persons and can also be replaced by them.

The system is the most modern of the screw systems and designed for 400VAC/250VDC networks.

The DO fuse range comprises the standardized fuse sizes D01, D02 and D03.

The range of applications for DO fuse-links for general application is the protection of cables and power lines. They limit and cut off unacceptable overcurrents and short circuit currents up to their nominal breaking capacity. DO fuse-links “gG” also protect equipments and installations against dynamic effects of high short circuit currents.

TECHNICAL DATA OVERVIEW

Voltage Range AC	400 ... 440 VAC
Voltage DC	250 VDC
Ampere Range (A)	2 ... 100 A
Speed/Characteristic	gG
I.R. AC (IEC)	50 kA
Product Size	D01 to D03

FEATURES & BENEFITS

- Insulated body suitable for high mechanical and thermal impacts
- Top and bottom contacts made of nickel plated or silver plated copper alloy
- Safe cut-off short circuits and over currents due to special design of fuse element
- Clear indication of operation condition due to coloured indicator un top contact
- Low power dissipation
- Optimized size
- Resistant to aging

APPLICATIONS

- House incoming units
- Meter distribution units
- Distribution cabinets
- Installation cabinets
- Fuse boxes

STANDARDS

- DIN VDE 0636-3



NEOZED DO fuse-links gG 400/440VAC

PRODUCT RANGE



D01GG40V2

Size D01 (E14) gG

Catalog number	Item number	Rated voltage AC (IEC)	Rated voltage DC (IEC)	Rated current I _n	Colour	Power dissipation at I _n	Utilisation category	Package	Weight
D01GG40V2	T214676	400 V	250 V	2 A	pink	1.5 W	gG	50	6.6 g
D01GG40V4	W200809	400 V	250 V	4 A	brown	1.6 W	gG	50	6.6 g
D01GG40V6	B215695	400 V	250 V	6 A	green	1.7 W	gG	50	6.6 g
D01GG40V10	W211090	400 V	250 V	10 A	red	1.8 W	gG	50	6.6 g
D01GG40V13	C201206	400 V	250 V	13 A	black	2.1 W	gG	50	6.6 g
D01GG40V16	R223023	400 V	250 V	16 A	grey	2.2 W	gG	50	6.6 g



D02GG40V20

Size D02 (E18) gG

Catalog number	Item number	Rated voltage AC (IEC)	Rated voltage DC (IEC)	Rated current I _n	Colour	Power dissipation at I _n	Utilisation category	Package	Weight
D02GG40V20	B217742	400 V	250 V	20 A	blue	2 W	gG	50	12 g
D02GG40V25	W213160	400 V	250 V	25 A	yellow	3 W	gG	50	12 g
D02GG40V32	S227647	400 V	250 V	32 A	black	-	gG	50	12 g
D02GG40V35	R219826	400 V	250 V	35 A	black	3.9 W	gG	50	12 g
D02GG40V40	Q1028666	400 V	250 V	40 A	black	3.9 W	gG	50	12 g
D02GG40V50	D215191	400 V	250 V	50 A	white	4.7 W	gG	50	12 g
D02GG40V63	C201873	400 V	250 V	63 A	copper	5.4 W	gG	50	12 g



D03GG40V80

Size D03 (M30x2) gG

Catalog number	Item number	Rated voltage AC (IEC)	Rated voltage DC (IEC)	Rated current I _n	Colour	Power dissipation at I _n	Utilisation category	Package	Weight
D03GG40V80	L216716	400 V	250 V	80 A	silver	5.6 W	gG	10	41 g
D03GG40V100	N212647	400 V	250 V	100 A	red	6.7 W	gG	10	41 g



D01GG44V10

Size D01 (E14) gG Marine

Catalog number	Item number	Rated voltage AC (IEC)	Rated voltage DC (IEC)	Rated current I _n	Colour	Power dissipation at I _n	Utilisation category	Package	Weight
D01GG44V2	E218780	440 V	250 V	2 A	pink	1.5 W	gG	50	6.6 g
D01GG44V4	V219829	440 V	250 V	4 A	brown	1.6 W	gG	50	6.6 g
D01GG44V6	X223028	440 V	250 V	6 A	green	1.7 W	gG	50	6.6 g
D01GG44V10	S201358	440 V	250 V	10 A	red	1.8 W	gG	50	6.6 g
D01GG44V16	C211096	440 V	250 V	16 A	grey	2.2 W	gG	50	6.6 g

NEOZED DO fuse-links gG 400/440VAC

PRODUCT RANGE

Size D02 (E18) gG Marine



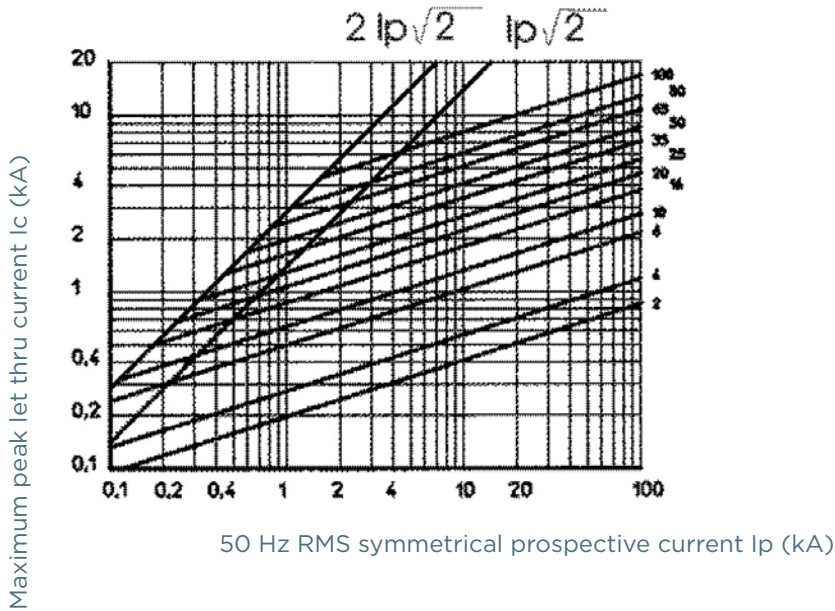
D02GG44V25

Catalog number	Item number	Rated voltage AC (IEC)	Rated voltage DC (IEC)	Rated current I _n	Colour	Power dissipation at I _n	Utilisation category	Package	Weight
D02GG44V20	X212126	440 V	250 V	20 A	blue	2 W	gG	50	12.6 g
D02GG44V25	S213663	440 V	250 V	25 A	yellow	3 W	gG	50	12.6 g
D02GG44V35	C214684	440 V	250 V	35 A	black	3.9 W	gG	50	12.6 g
D02GG44V50	J215702	440 V	250 V	50 A	white	4.7 W	gG	50	12.6 g
D02GG44V63	N216718	440 V	250 V	63 A	copper	5.4 W	gG	50	12.6 g

NEOZED D0 fuse-links gG 400/440VAC

CUT-OFF CURRENT CHARACTERISTIC

NEOZED D0 fuse-links gG 400/440VAC



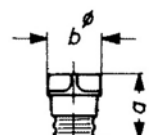
DIMENSIONS

NEOZED Fuse-Links

Size	a	b
D01	36 mm	11 mm
D02	36 mm	15 mm
D03	43 mm	22 mm

Dimensions in mm

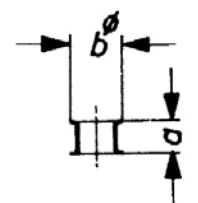
NEOZED Screw Caps



Article Number	a	b
01714.000000	29,5	23
01715.000000	29,5	23
01710.000000	31	25
01711.000000	31	25
01712.000000	37	40

Dimensions in mm

NEOZED Adapter Inserts



Article Number	a	b
01705.000000	10	12
01706.000000	10	16
01707.000000	10	27

Dimensions in mm

NEOZED D0 fuse-links gG 400/440VAC

ACCESSORIES



01714.000200



01715.000000



01711.000200



01770.000200

Screw caps

Catalog number	Item number	Features	Package	Weight
DO screw caps 400VAC synthetic				
01714.000200	E212501	D01, E14, 16A, with testing hole	20	11.8 g
01715.000200	P211981	D02, E18, 63A, with testing hole	20	11.6 g
11714.000220	R214536	D01, E14, 16A, with sealing and testing hole	20	11.6 g
11715.000220	S214537	D02, E18, 63A, with sealing and testing hole	20	11.6 g
01715.000000	L206435	D02, E18, 63A, without testing hole	20	12 g
01715.890200	M214026	D02, E18, 63A, with adapter insert for fuse links size D01	20	12.4 g
DO screw caps 400/440 VAC, 250 V DC porcelain, with removal grips				
01711.000200	T215044	D02, E18, 63A, with testing hole	20	18.5 g
01712.000200	V215045	D03, M30x2, 100A, with testing hole	10	84 g
01770.000200	F1033740	D01, E14, 16A, with testing hole	20	16.4 g



01716.000000

DO Screw cap wrench

Catalog number	Item number	Features	Package	Weight
01716.000000	X222936	Screw cap wrench	1	30 g



01705.006000



01705.010000

DO cartridge ring adapter inserts D01 E14

Catalog number	Item number	Features	Package	Weight
DO cartridge ring adapter inserts D01 (E14)				
01705.002000	J216576	2A, pink	50	0.4 g
01705.004000	J219681	4A, brown	50	0.4 g
01705.006000	P206438	6A, green	50	0.4 g
01705.010000	M213014	10A, red	50	0.4 g



01706.002000



01706.020000

DO cartridge ring adapter inserts D02 E18

Catalog number	Item number	Application	Features	Package	Weight
DO cartridge ring adapter inserts D02 (E18)					
01706.002000	K216577	For D01 fuse links in D02 fuse bases	2A, pink	50	0.6 g
01706.004000	S222127	For D01 fuse links in D02 fuse bases	4A, brown	50	0.6 g
01706.006000	R211983	For D01 fuse links in D02 fuse bases	6A, green	50	0.6 g
01706.010000	H216069	For D01 fuse links in D02 fuse bases	10A, red	50	0.6 g
01706.016000	Q218629	For D01 fuse links in D02 fuse bases	16A, grey	50	0.5 g
01706.020000	S200668	For D02 fuse links	20A, blue	50	0.5 g
01706.025000	R213524	For D02 fuse links	25A, yellow	50	0.6 g
01706.035000	J216070	For D02 fuse links	35A, black	50	0.5 g
01706.050000	R218630	For D02 fuse links	50A, white	50	0.6 g

NEOZED D0 fuse-links gG 400/440VAC

ACCESSORIES



01707.080000

D0 cartridge ring adapter inserts D03 M30x2

Catalog number	Item number	Features	Package	Weight
D0 cartridge ring adapter inserts D03 (M30x2)				
01707.080000	T200669	80A, silver	20	1.6 g

Locking devices



01714.800000



01715.810000



01714.820000

Catalog number	Item number	Features	Design	Package	Weight
01714.800000	D212546	Locking cap for D01 E14 fuse-bases for authorized personal only (EVU)	-	5	12.2 g
01714.810000	P213062	Locking cap for D01 E14 fuse-bases	-	5	12.4 g
01714.820000	K213564	Special key for locking caps for authorized personal only (EVU)	-	1	32.5 g
01714.830000	J214069A	Special key for locking caps	-	1	43 g
01715.800000	R214582	Locking cap for D02 E18 fuse-bases for authorized personal only (EVU)	-	5	14 g
01715.810000	Y215094	Locking cap for D02 E18 fuse-bases	-	5	13.7 g

Adapter inserts



01713.000000

Catalog number	Item number	Features	Package	Weight
01709.000000	P214028	Adapter for Size D02 fuse-links in Size D03 bases	25	1.3 g
01713.000000	Z215049	Adapter for Size D01 fuse-links in Size D02 bases	50	0.9 g
01733.000000	J218117	Adapter for Size D01 fuse-links in DL-bases	100	0.2 g

Архангельск (8182)63-90-72
Астана (7172)727-132
Астрахань (8512)99-46-04
Барнаул (3852)73-04-60
Белгород (4722)40-23-64
Брянск (4832)59-03-52
Владивосток (423)249-28-31
Волгоград (844)278-03-48
Вологда (8172)26-41-59
Воронеж (473)204-51-73
Екатеринбург (343)384-55-89
Иваново (4932)77-34-06

Ижевск (3412)26-03-58
Иркутск (395)279-98-46
Казань (843)206-01-48
Калининград (4012)72-03-81
Калуга (4842)92-23-67
Кемерово (3842)65-04-62
Киров (8332)68-02-04
Краснодар (861)203-40-90
Красноярск (391)204-63-61
Курск (4712)77-13-04
Липецк (4742)52-20-81

Магнитогорск (3519)55-03-13
Москва (495)268-04-70
Мурманск (8152)59-64-93
Набережные Челны (8552)20-53-41
Нижний Новгород (831)429-08-12
Новокузнецк (3843)20-46-81
Новосибирск (383)227-86-73
Омск (3812)21-46-40
Орел (4862)44-53-42
Оренбург (3532)37-68-04
Пенза (8412)22-31-16

Пермь (342)205-81-47
Ростов-на-Дону (863)308-18-15
Рязань (4912)46-61-64
Самара (846)206-03-16
Санкт-Петербург (812)309-46-40
Саратов (845)249-38-78
Севастополь (8692)22-31-93
Симферополь (3652)67-13-56
Смоленск (4812)29-41-54
Сочи (862)225-72-31
Ставрополь (8652)20-65-13

Сургут (3462)77-98-35
Тверь (4822)63-31-35
Томск (3822)98-41-53
Тула (4872)74-02-29
Тюмень (3452)66-21-18
Ульяновск (8422)24-23-59
Уфа (347)229-48-12
Хабаровск (4212)92-98-04
Челябинск (351)202-03-61
Череповец (8202)49-02-64
Ярославль (4852)69-52-93

Киргизия (996)312-96-26-47

Россия (495)268-04-70

Казахстан (772)734-952-31

<https://mersen.nt-rt.ru/> || mnh@nt-rt.ru